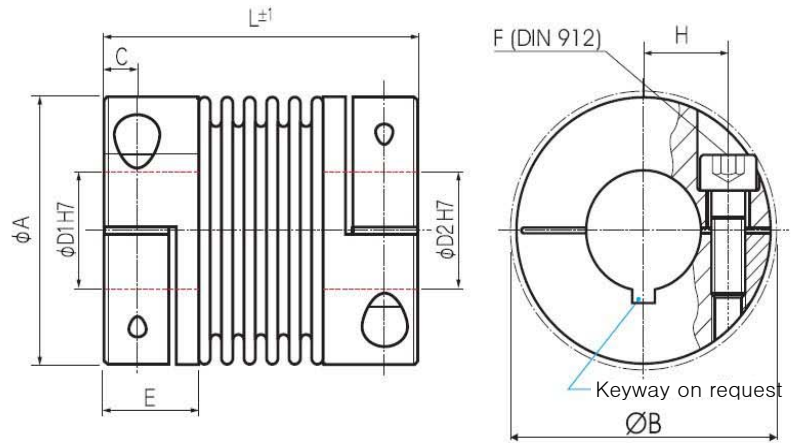


## Miniature Metal Bellows Coupling

with Collet Clamp



Order Code : **KB2/45 - 50 - 10 - 16 - S**

Type / Size

Length L

Ø D1  
H7

Ø D2  
H7

Options

	Torque $T_{KN}$ (Nm)	Dimensions ( mm )								Technical Ratings							
		L	Ø A	D1 / D2	H	C	Ø B	E	F	Mass (g)	Moment of Inertia J (g cm <sup>2</sup> )	Spring Stiffness			Misalignment		
		Length (±1)	Outer Ø	Bore Sizes (H7) min~max			Max Ø	Hub- Length	Screw (DIN912) $T_A$ (Nm)			torsional $C_T$ (Nm/rad)	radial $C_R$ (N/mm)	axial $C_A$ (N/mm)	radial $\Delta Kr$ (mm)	axial $\Delta Ka$ (mm)	angular $\Delta Kw$ (°)
KB2/1	0.1	25	10	1-4	3.4	2	11	7	M1.6 0.1	3	0.5	65	10	14	0.12	0.2	1.2
KB2/5	0.5	21	15.5	3-8	5.2	2.5	17.5	8	M2	7.5	2.7	260	43	13	0.1	0.2	1
		0.43							7.8	2.8	200	18	10	0.15	0.3	1.5	
									8.2	3	160	9	8	0.2	0.4	2	
KB2/10	1	23	15.5	3-8	5.2	2.5	17.5	8	M2	9	3.1	510	74	27	0.1	0.2	1
		0.43							9.3	3.4	380	31	20	0.15	0.3	1.5	
									10	3.7	310	16	16	0.2	0.4	2	
KB2/15	1.5	26	20	3-10	7	3	21	9	M2.5	13	8	750	59	15	0.1	0.3	1.5
		0.85							15	9.3	700	20	9	0.15	0.4	2	
KB2/20	2	32	25	3-14	9	3.5	27	11	M3	29	24	1500	67	12	0.15	0.3	1.5
									32	27	1300	21	11	0.2	0.4	1.5	
		2							33	29	1050	11	9	0.25	0.5	2	
KB2/45	4.5	41	32.5	6-16	12	5	34	14	M4	61	100	6500	168	32	0.1	0.3	1.5
		3.5							67	112	4200	41	20	0.2	0.5	2	
KB2/100	10	47	40.5	6-25	15.5	5	41.5	14	M4	86	233	8100	120	27	0.15	0.4	1.5
		4.5							106	290	6800	29	17	0.3	0.6	2	

- \* Speed : max. 15000min<sup>-1</sup>
- \* Hub : Bore Tolerance : H7 keyway acc. DIN 6885 optional
- \* Material : Bellows - Stainless Steel  
Hub - Aluminium ( also available in Stainless Steel )
- \* Temperature Range : -30 °C ~ 120 °C

