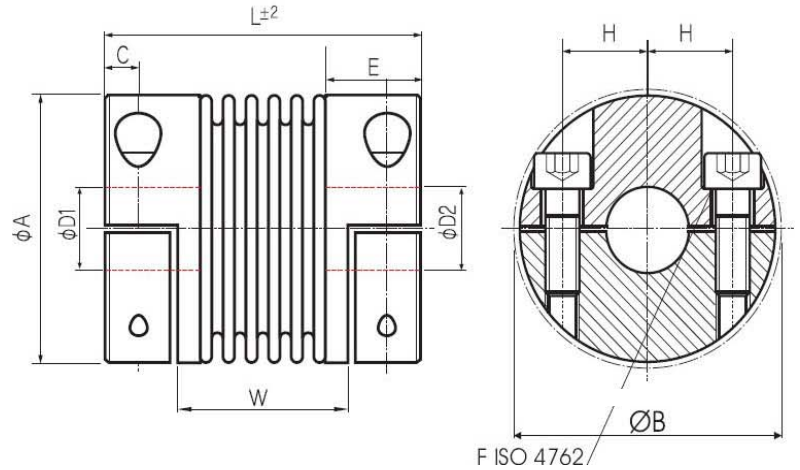




Miniature Metal Bellows Coupling

with Split Hub



Order Code : **KB2H/45 - 50 - 10 - 16 - S**

Type / Size

Length L

Ø D1
H7

Ø D2
H7

Options

	Torque T_{KN} (Nm)	Dimensions (mm)									Technical Ratings															
		L	Ø A	D1 / D2	H	C	Ø B	E	W	F	Mass (g)	Moment of Inertia J (g cm ²)	Spring Stiffness			Misalignment										
		Length (±1)	Outer Ø	Bore Sizes (H7) min~max			Max Ø	Hub- Length		Screw (DIN912) T_A (Nm)			torsional C_T (Nm/rad)	radial C_R (N/mm)	axial C_A (N/mm)	radial ΔKr (mm)	axial ΔKa (mm)	angular ΔKw (°)								
KB2H/5	0.5	21	15.5	3-7	5.2	2.5	17.5	8	12	M2	7.5	2.7	260	43	13	0.1	0.2	1								
		16							7.8										2.8	200	18	10	0.15	0.3	1.5	
		19							0.43										8.2	3	160	9	8	0.2	0.4	2
KB2H/10	1	23	15.5	3-8	5.2	2.5	17.5	8	14	M2	9	3.1	510	74	27	0.1	0.2	1								
		17							9.3										3.4	380	31	20	0.15	0.3	1.5	
		22							0.43										10	3.7	310	16	16	0.2	0.4	2
KB2H/15	1.5	26	20	3-10	7	3	21	9	14.4	M2.5	13	8	750	59	15	0.1	0.3	1.5								
		19.4							0.85										15	9.3	700	20	9	0.15	0.4	2
		18.4							29										24	1500	67	12	0.15	0.3	1.5	
KB2H/20	2	38	25	3-14	9	3.5	27	11	24.4	M3	32	27	1300	21	11	0.2	0.4	1.5								
		28.4							2										33	29	1050	11	9	0.25	0.5	2
		24							61										100	6500	168	32	0.1	0.3	1.5	
KB2H/45	4.5	41	32.5	6-16	12	5	34	14	33	3.5	67	112	4200	41	20	0.2	0.5	2								
		30							M4										86	233	8100	120	27	0.15	0.4	1.5
KB2H/100	10	48	40.5	6-22	15.5	5	41.5	14	39	4.5	106	290	6800	29	17	0.3	0.6	2								
		39							4.5										106	290	6800	29	17	0.3	0.6	2

- * Speed : max. 15000min⁻¹
- * Hub : Bore Tolerance : H7 keyway acc. DIN 6885 optional
- * Material : Bellows - Stainless Steel
Hub - Aluminium (also available in Stainless Steel)
- * Temperature Range : -30 °C ~ 120 °C

