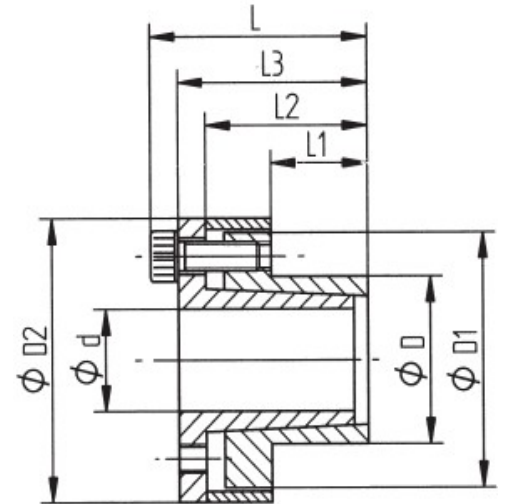


## Locking Device

Recommended machining

tolerances :

Shaft h8 Hub H8



Order Code :

For a shaft with  $d=95\text{mm}$  and a transmissible torque value lower than or equal to  $11000\text{Nm}$

### KBS 80 – 95 X 120

Inner Ø / Outer Ø [d x D]	Rate Torque T [Nm]	Dimensions				Flange		surface pressure on		Screws			Mass [kg]
		L [mm]	L1 [mm]	L2 [mm]	L3 [mm]	Outer D1 [mm]	Inner D2 [mm]	Shaft P <sub>w</sub> [N/mm <sup>2</sup> ]	Hub P <sub>n</sub> [N/mm <sup>2</sup> ]	n [St]	size [DIN]	TA [Nm]	
6x14	12	25.5	10	18.5	22.5	23	25	190	80	3	M3x10	2.2	0.02
8x15	29	29.5	12	21.5	25.5	24	27	205	110	3	M4x12	5	0.06
9x16	31	31.5	14	23.5	27.5	25	28	150	85	3	M4x12	5	0.065
10x16	35	31.5	14	23.5	27.5	25	28	140	85	3	M4x12	5	0.08
11x18	52	31.5	14	23.5	27.5	28	32	170	105	4	M4x12	5	0.09
12x18	58	31.5	14	23.5	27.5	28	32	150	100	4	M4x12	5	0.09
14x23	69	31.5	14	23.5	27.5	35	39	140	80	4	M4x12	5	0.11
15x24	170	42.5	16	29.5	36.5	40	45	158	98	4	M6x18	17	0.21
16x24	180	42.5	16	29.5	36.5	40	45	148	98	4	M6x18	17	0.22
18x26	200	45.5	19	32.5	39.5	42	47	180	125	4	M6x18	17	0.22
19x27	210	45.5	19	32.5	39.5	43	49	170	120	4	M6x18	17	0.25
20x28	220	45.5	19	32.5	39.5	44	50	160	115	4	M6x18	17	0.25
22x32	250	52.5	26	39.5	46.5	48	54	115	80	4	M6x18	17	0.3
24x34	395	52.5	26	39.5	46.5	50	56	146	102	6	M6x18	17	0.35
25x34	410	52.5	26	39.5	46.5	50	56	140	102	6	M6x18	17	0.35
28x39	465	52.5	25.5	39.5	46.5	55	61	135	98	6	M6x18	17	0.45
30x41	510	52.5	25.5	39.5	46.5	57	62	127	90	6	M6x18	17	0.45
32x43	705	52.5	25.5	39.5	46.5	59	65	146	108	8	M6x18	17	0.45
35x47	790	58.5	31.5	45.5	52.5	62	69	105	80	8	M6x18	17	0.55
38x50	860	58.5	31.5	45.5	52.5	66	72	100	76	8	M6x18	17	0.6
40x53	900	58.5	31.5	45.5	52.5	69	75	96	72	8	M6x18	17	0.65
42x55	940	58.5	31.5	45.5	52.5	71	78	90	70	8	M6x18	17	0.9
45x59	1840	79	45	62.5	71	80	86	110	85	8	M8x22	41	1.1
48x62	2000	79	45	62.5	71	81	87	105	80	8	M8x22	41	1.1
50x65	2100	79	45	62.5	71	86	92	100	75	8	M8x22	41	1.25
55x71	2580	89	55	72.5	81	92	98	85	65	9	M8x22	41	1.5
60x77	2800	89	55	72.5	81	98	104	75	60	9	M8x22	41	1.6
65x84	3050	89	55	72.5	81	105	111	70	55	9	M8x22	41	1.9
70x90	5250	106.5	65	86.5	96.5	113	119	90	70	9	M10x25	83	2.85
75x95	5600	106.5	65	86.5	96.5	119	126	80	65	9	M10x25	83	2.95
80x100	8000	106.5	65	86.5	96.5	125	131	100	80	12	M10x25	83	3.3
85x106	8500	106.5	65	86.5	96.5	131	137	85	75	12	M10x25	83	3.6
90x112	9000	106.5	65	86.5	96.5	137	144	80	75	12	M10x25	83	3.9
95x120	11000	106.5	65	86.5	96.5	142	149	100	80	14	M10x25	83	4.3
100x125	15000	106.5	65	86.5	96.5	147	154	120	95	18	M10x25	83	4.65
110x140	16000	140	90	114	128	172	180	80	65	12	M12x35	154	8.2
120x155	17500	140	90	114	128	187	198	70	55	12	M12x35	154	10.5