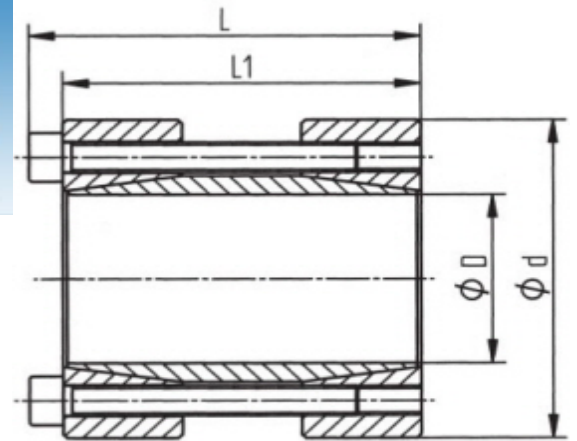


Rigid Shaft Coupling

Recommended machining

tolerances :

Shaft h8 Hub H8



Order Code :

For a shaft with $d=20\text{mm}$ and a transmissible torque value lower than or equal to 240Nm

KBS 95 – 20 X 50

Inner Ø / Outer Ø [d x D]	Rate Torque T [Nm]	Dimensions		Screws			Mass [kg]
		L [mm]	L1 [mm]	n [St.]	size [DIN 912]	TA [Nm]	
17x50	200	56	50	4	M6x40	17	0.19
18x50	220	56	50	4	M6x40	17	0.22
19x50	230	56	50	4	M6x40	17	0.39
20x50	240	56	50	4	M6x40	17	0.44
24x55	290	66	60	4	M6x40	17	0.64
25x55	450	66	60	6	M6x50	17	0.65
28x60	510	66	60	6	M6x50	17	0.72
30x60	550	66	60	6	M6x50	17	0.84
32x63	580	66	60	6	M6x50	17	1.1
35x75	790	83	75	4	M8x60	41	1.4
38x75	850	83	75	4	M8x60	41	1.8
40x75	900	83	75	4	M8x60	41	1.8
42x78	950	83	75	4	M8x60	41	1.9
45x85	1520	93	85	6	M8x70	41	1.9
48x90	1620	93	85	6	M8x70	41	1.95
50x90	1690	93	85	6	M8x70	41	2
55x94	2470	93	85	8	M8x70	41	2.2
60x100	2710	93	85	8	M8x70	41	2.35
65x105	2930	93	85	8	M8x70	41	3.65
70x115	3770	110	100	6	M10x80	83	5.18