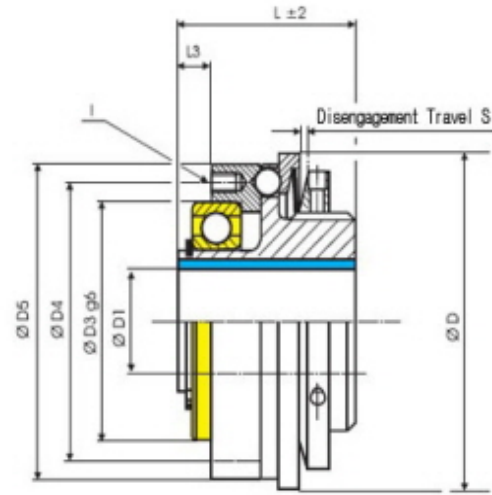
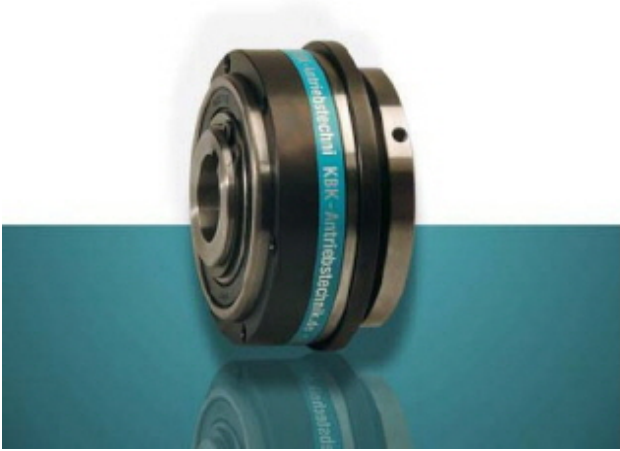


Safety Couplings

with keyway



Order Code : KBK/L-P-60 - 20H7 - 20Nm - C or D - 2

Type / Size

Ø D1

Disengagement
Torque

C=Single Position
D=Multi Position

Overload
Torque Range

| KBK/L-P-X | Dimensions (mm) | | | | | | | | | Technical Ratings | | | | |
|-----------|-------------------|-------------------------------|------|------|------|--------|----|-----|-----|------------------------------|------------------------------|---------------------------------|--------------|---|
| | Ø D | Ø D1 | Ø D3 | Ø D4 | Ø D5 | L | L3 | S | I | Overload Torque adjustable | | Maximum Speed rpm (1/min) | Mass (kg) | Moment of Inertia J (kg cm ²) |
| | Outer Ø | Bore Sizes (H7) min~max | | | | Length | | | 6X | 1 T _{KN} (Nm) | 2 T _{KN} (Nm) | | | |
| -10 | 49 | 6-12 | 37 | 42 | 47 | 26 | 5 | 0.7 | M3 | 3-7 | 5-10 | 12000 | 0.15 | 0.4 |
| -30 | 64 | 10-16 | 47 | 53 | 60 | 31.5 | 6 | 1.2 | M4 | 5-15 | 10-30 | 9400 | 0.45 | 1.9 |
| -60 | 79 | 15-24 | 62 | 69 | 75 | 45 | 8 | 1.2 | M5 | 13-35 | 20-60 | 7800 | 0.83 | 5.1 |
| -80 | 94 | 19-29 | 68 | 80 | 90 | 46 | 10 | 2 | M6 | 15-40 | 30-80 | 6400 | 1.4 | 12 |
| -150 | 94 | 19-29 | 68 | 80 | 90 | 46 | 10 | 2 | M6 | 50-130 | 65-150 | 5500 | 1.4 | 12 |
| -200 | 109 | 20-38 | 80 | 90 | 105 | 52 | 10 | 2 | M6 | 30-90 | 80-200 | 5500 | 1.64 | 19 |
| -300 | 119 | 20-42 | 90 | 102 | 115 | 58 | 10 | 2 | M8 | 60-200 | 150-300 | 5000 | 2.5 | 38 |
| -500 | 129 | 20-50 | 100 | 112 | 125 | 57 | 10 | 2 | M8 | 80-250 | 200-500 | 4500 | 3.8 | 68 |
| -800 | 169 | 30-60 | 110 | 125 | 165 | 80 | 15 | 2 | M12 | 260-600 | 500-900 | 3500 | 11 | 318 |
| -1400 | 169 | 30-60 | 110 | 125 | 165 | 80 | 15 | 2 | M12 | 450-900 | 800-1400 | 3500 | 11 | 318 |

* Temperature Range :

-30 °C ~ 120 °C