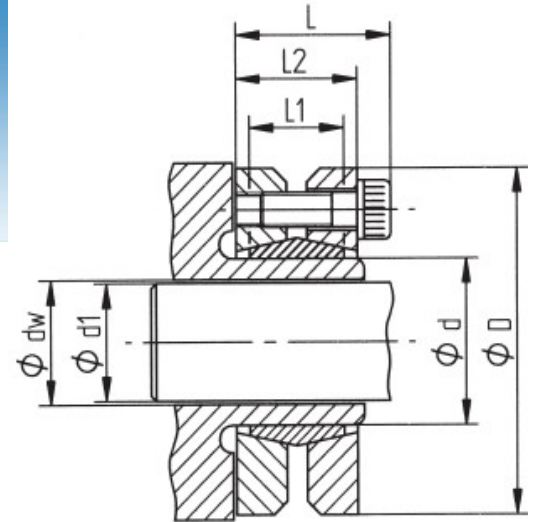


Shrink Disc

Recommended machining

tolerances :

Shaft d h9



Order Code :

For a shaft with $d=36\text{mm}$ and a transmissible torque value lower than or equal to 770Nm

KBS 19 – 36 X 72

Hollow Shaft $\varnothing d$ [mm]	Shaft $\varnothing dw$ [mm]	Outer $\varnothing D$ [mm]	Rate Torque T [Nm]	Dimensions				Welle Shaft P_w [N/mm ²]	Screws			Mass [kg]
				L [mm]	L1 [mm]	L2 [mm]	[dw-d1]		n [St.]	size [DIN 912]	TA [Nm]	
24	19	50	220	23	14	20	0.017	286	6	M5×18	4	0.2
24	20	50	280	23	14	20	0.017	286	6	M5×18	4	0.2
24	21	50	330	23	14	20	0.017	286	6	M5×18	4	0.2
30	24	60	350	25	16	22	0.017	233	7	M5×18	4	0.3
30	25	60	400	25	16	22	0.017	233	7	M5×18	4	0.3
30	26	60	470	25	16	22	0.017	233	7	M5×18	4	0.3
36	28	72	770	27.5	18	23.5	0.032	307	8	M6×20	12	0.4
36	30	72	960	27.5	18	23.5	0.032	307	8	M6×20	12	0.4
36	31	72	980	27.5	18	23.5	0.032	307	8	M6×20	12	0.4
44	32	80	1200	29.5	20	25.5	0.032	317	7	M6×20	12	0.6
44	35	80	1400	29.5	20	25.5	0.032	317	7	M6×20	12	0.6
44	36	80	1500	29.5	20	25.5	0.032	317	7	M6×20	12	0.6
50	38	90	1500	31.5	22	27.5	0.032	289	8	M6×25	12	0.8
50	40	90	1800	31.5	22	27.5	0.032	289	8	M6×25	12	0.8
50	42	90	2100	31.5	22	27.5	0.032	289	8	M6×25	12	0.8
55	42	100	1700	34.5	23	30.5	0.032	252	8	M6×25	12	1.1
55	45	100	2100	34.5	23	30.5	0.032	252	8	M6×25	12	1.1
55	48	100	2600	34.5	23	30.5	0.032	252	8	M6×25	12	1.1
62	48	110	2700	34.5	23	30.5	0.048	279	10	M6×25	12	1.3
62	50	110	3000	34.5	23	30.5	0.048	279	10	M6×25	12	1.3
62	52	110	3200	34.5	23	30.5	0.048	279	10	M6×25	12	1.3
68	50	115	2500	34.5	23	30.5	0.048	255	10	M6×25	12	1.4
68	55	115	3100	34.5	23	30.5	0.048	255	10	M6×25	12	1.4
68	60	115	4100	34.5	23	30.5	0.048	255	10	M6×25	12	1.4
75	55	138	3500	37.8	25	32.5	0.048	273	7	M8×30	30	2.3
75	60	138	4700	37.8	25	32.5	0.048	273	7	M8×30	30	2.3
75	65	138	6000	37.8	25	32.5	0.048	273	7	M8×30	30	2.3
80	60	145	4100	37.8	25	32.5	0.048	256	7	M8×30	30	2.6
80	65	145	5200	37.8	25	32.5	0.048	256	7	M8×30	30	2.6
80	70	145	6600	37.8	25	32.5	0.048	256	7	M8×30	30	2.6
90	65	155	6200	44.3	30	39	0.048	271	10	M8×35	30	3.4
90	70	155	7700	44.3	30	39	0.048	271	10	M8×35	30	3.4
90	75	155	9400	44.3	30	39	0.048	271	10	M8×35	30	3.4
100	70	170	7600	49.3	34	44	0.048	258	12	M8×35	30	4.6
100	75	170	9300	49.3	34	44	0.048	258	12	M8×35	30	4.6
100	80	170	11300	49.3	34	44	0.048	258	12	M8×35	30	4.6
110	75	185	9100	56.4	39	50	0.048	244	9	M10×40	59	6
110	80	185	11000	56.4	39	50	0.048	244	9	M10×40	59	6
110	85	185	12200	56.4	39	50	0.048	244	9	M10×40	59	6
125	85	215	13300	60.4	42	54	0.069	266	12	M10×40	59	8.3
125	90	215	15800	60.4	42	54	0.069	266	12	M10×40	59	8.3
125	95	215	18600	60.4	42	54	0.069	266	12	M10×40	59	8.3
140	95	230	18600	68	46	60.5	0.07	264	10	M12×45	100	10
140	100	230	21600	68	46	60.5	0.07	264	10	M12×45	100	10
140	105	230	24900	68	46	60.5	0.07	264	10	M12×45	100	10

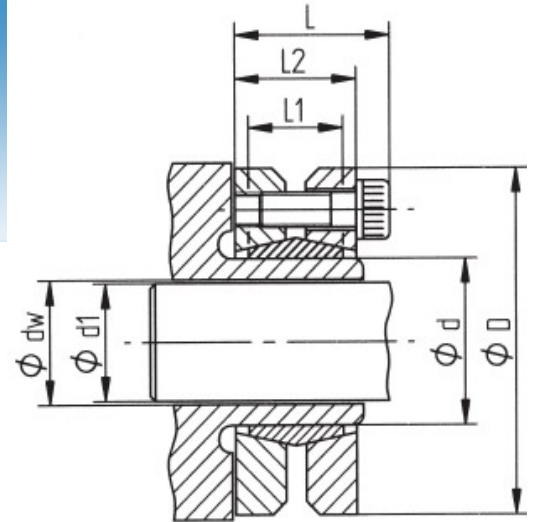


Shrink Disc

Recommended machining

tolerances :

Shaft d h9



Order Code :

For a shaft with $d=165\text{mm}$ and a transmissible torque value lower than or equal to 38900Nm

KBS 19 – 165 X 290

Hollow Shaft $\varnothing d$ [mm]	Shaft $\varnothing dw$ [mm]	Outer $\varnothing D$ [mm]	Rate Torque T [Nm]	Dimensions				Welle Shaft P_w [N/mm ²]	Screws			Mass [kg]
				L [mm]	L1 [mm]	L2 [mm]	[dw-d1]		n [St.]	size [DIN 912]	TA [Nm]	
155	105	265	25400	72	50	64.5	0.07	263	12	M12×50	100	15
155	110	265	29000	72	50	64.5	0.07	263	12	M12×50	100	15
155	115	265	32800	72	50	64.5	0.07	263	12	M12×50	100	15
165	115	290	38900	81	56	71	0.07	277	8	M16×55	250	22
165	120	290	43600	81	56	71	0.07	277	8	M16×55	250	22
165	125	290	47600	81	56	71	0.07	277	8	M16×55	250	22
175	125	300	42900	81	56	71	0.08	261	8	M16×55	250	22
175	130	300	47800	81	56	71	0.08	261	8	M16×55	250	22
175	135	300	53100	81	56	71	0.08	261	8	M16×55	250	22
185	135	330	60000	96	71	86	0.09	244	10	M16×55	250	37
185	140	330	66400	96	71	86	0.09	244	10	M16×55	250	37
185	145	330	73100	96	71	86	0.09	244	10	M16×55	250	37
195	140	350	75600	96	71	86	0.09	277	12	M16×55	250	41
195	150	350	90600	96	71	86	0.09	277	12	M16×55	250	41
195	155	350	98700	96	71	86	0.09	277	12	M16×55	250	41
200	150	350	87000	96	71	86	0.09	270	12	M16×55	250	41
200	155	350	94800	96	71	86	0.09	270	12	M16×55	250	41
200	160	350	103000	96	71	86	0.09	270	12	M16×55	250	41
220	160	370	110000	114	88	104	0.09	248	15	M16×80	250	54
220	165	370	120000	114	88	104	0.09	248	15	M16×80	250	54
220	170	370	129000	114	88	104	0.09	248	15	M16×80	250	54
240	170	405	146000	121.5	92	109	0.09	272	12	M20×80	490	67
240	180	405	168000	121.5	92	109	0.09	272	12	M20×80	490	67
240	190	405	190000	121.5	92	109	0.09	272	12	M20×80	490	67
260	190	430	197000	132.5	103	120	0.1	262	14	M20×90	490	82
260	200	430	224000	132.5	103	120	0.1	262	14	M20×90	490	82
260	210	430	254000	132.5	103	120	0.1	262	14	M20×90	490	82
280	210	460	260000	146.5	114	134	0.1	251	16	M20×100	490	102
280	220	460	290000	146.5	114	134	0.1	251	16	M20×100	490	102
280	230	460	327000	146.5	114	134	0.1	251	16	M20×100	490	102
300	230	485	334000	154.5	122	142	0.1	246	18	M20×100	490	118
300	240	485	371000	154.5	122	142	0.1	246	18	M20×100	490	118
300	245	485	410000	154.5	122	142	0.1	246	18	M20×100	490	118
320	240	520	380000	154.5	122	142	0.1	257	20	M20×100	490	131
320	250	520	419000	154.5	122	142	0.1	257	20	M20×100	490	131
320	260	520	457000	154.5	122	142	0.1	257	20	M20×100	490	131
340	250	570	465000	168.5	134	156	0.1	264	24	M20×110	490	186
340	260	570	506000	168.5	134	156	0.1	264	24	M20×110	490	186
340	270	570	555000	168.5	134	156	0.1	264	24	M20×110	490	186
350	270	580	483000	174.5	140	162	0.1	245	24	M20×110	490	195
350	280	580	530000	174.5	140	162	0.1	245	24	M20×110	490	195
350	285	580	580000	174.5	140	162	0.1	245	24	M20×110	490	195