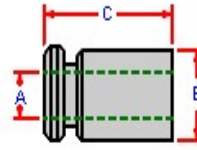
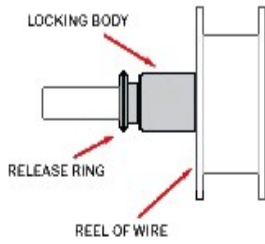


# FastLock

## ▶ Shaft Locking Collars



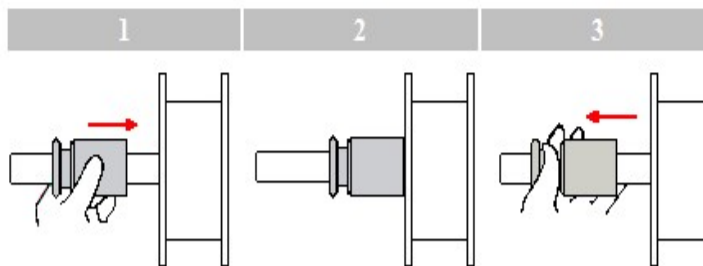
### Metric ( mm )

### Dimensions

### English (in)

### Dimensions

Model	A	B	C	kg	Model	A	B	C	lb
FL-10mm	10	22	45	0.08	FL-0.250	0.250	0.73	1.00	0.06
FL-15mm	15	28	45	0.13	FL-0.312	0.312	0.73	1.00	0.06
FL-16mm	16	28	45	0.13	FL-0.375	0.375	0.85	1.78	0.19
FL-18mm	18	31.2	45.2	0.14	FL-0.437	0.437	0.85	1.78	0.18
FL-20mm	20	37	45	0.24	FL-0.500	0.500	1.10	1.78	0.23
FL-22mm	22	37	45	0.22	FL-0.562	0.562	1.10	1.78	0.26
FL-25mm	25	37	45	0.19	FL-0.625	0.625	1.10	1.78	0.28
FL-30mm	30	50	45	0.39	FL-0.750	0.750	1.23	1.78	0.31
FL-32mm	32	57	48	0.53	FL-0.875	0.875	1.45	1.78	0.37
FL-35mm	35	57	48	0.47	FL-1.00	1.000	1.45	1.78	0.39
FL-40mm	40	63	48	0.56	FL-1.25	1.250	2.23	1.87	0.79
FL-45mm	45	70	48	0.67	FL-1.37	1.370	2.23	1.87	0.93
FL-50mm	50	70	48	0.54	FL-1.50	1.500	2.23	1.87	0.89
FL-56mm	56	70	48	0.39	FL-1.625	1.625	2.35	1.87	0.91
* 위 size외 기타 size도 공급 가능합니다. (별도 문의 바랍니다.)					FL-1.75	1.750	2.72	1.87	1.51
					FL-1.875	1.875	2.72	1.87	1.37
					FL-2.0	2.000	2.95	1.87	1.18
					FL-2.5	2.500	3.47	1.87	1.00
					FL-3.0	3.000	3.47	1.87	0.90



Slide locking collar as shown

Locking collar holds reel.

To release, hold body and pull release ring. This makes the "gap" between the body and ring larger allowing the FastLock to slide off easily.