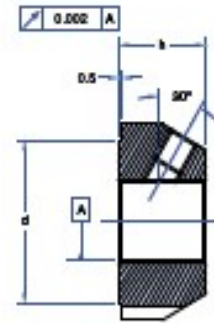
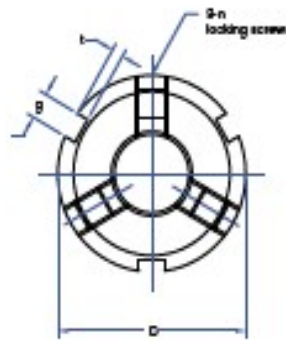




MF Series—30° Locking

- Material—AISI 4140
- Hardness—HRC 28-32
- Precision—ISO 4H



Part Number	Dimensions in mm						Locking Screws			
	D ₁ P	D	h	g	t	d	DIN	Max Tightening Torque (T) N-m	Allowable Axial Load (C _a) kN	Loosening Torque (T) N-m
MF 12x1		30	14	4	2	25	M5	4.7	40	20
MF 15x1		34	16	4	2	26	M6	8	60	25
MF 17x1		36	16	5	2	28	M6	8	70	30
MF 20x1		38	18	5	2	32	M6	8	90	40
MF 20x1.5		38	18	5	2	32	M6	8	90	40
MF 25x1.5		42	18	5	2	36	M6	8	120	80
MF 30x1.5		48	18	5	2	43	M6	8	145	140
MF 35x1.5		53	18	5	2	48	M8	18.6	170	180
MF 40x1.5		58	20	6	2.5	52	M8	18.6	190	220
MF 45x1.5		65	20	6	2.5	59	M8	18.6	220	250
MF 50x1.5		70	20	6	2.5	64	M8	18.6	250	270
MF 55x2		75	22	7	3	68	M8	18.6	310	290
MF 60x2		80	22	7	3	73	M8	18.6	350	310
MF 65x2		85	22	7	3	78	M8	18.6	400	320
MF 70x2		92	24	8	3.5	84	M8	18.6	450	340
MF 75x2		98	24	8	3.5	90	M8	18.6	480	360
MF 80x2		105	24	8	3.5	96	M8	18.6	580	380
MF 85x2		112	24	8	3.5	104	M8	18.6	620	400
MF 90x2		118	26	10	4	108	M8	18.6	680	450
MF 100x2		128	26	10	4	118	M8	18.6	740	500
MF 110x2		145	30	12	5	132	M8	18.6	800	550
MF 120x2		155	30	12	5	142	M8	18.6	860	600
MF 130x2		165	30	12	5	152	M8	18.6	920	650
MF 140x2		180	32	12	5	165	M10	35	980	700
MF 150x2		195	32	12	5	180	M10	35	1050	750
MF 160x3		210	34	12	5	190	M10	35	1200	800
MF 170x3		220	34	12	5	200	M10	35	1260	850
MF 180x3		230	36	12	5	205	M10	35	1370	900
MF 190x3		240	36	12	5	220	M10	35	1430	950
MF 200x3		250	36	12	5	230	M10	35	1500	990

When ordering the above products, please refer to the HOW TO ORDER section on page 5.

The specifications and data in this publication are believed to be accurate and reliable. However, it is the responsibility of the product user to determine the suitability of Nook Industries products for a specific application. While defective products will be replaced without charge if promptly returned, no liability is assumed beyond such replacement.