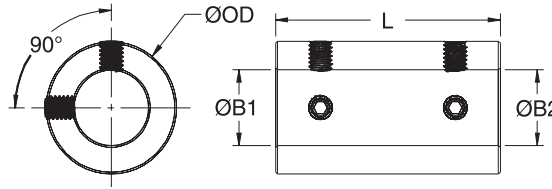
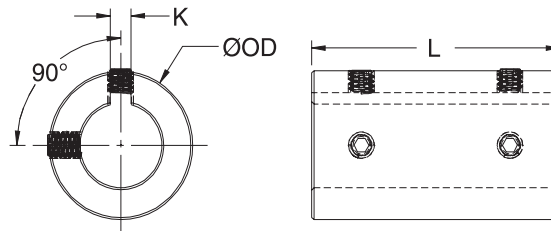


MSCX



MSCC



- Precision honed bore on straight bore couplings.
- Additional sizes available.
- Clamp style couplings available on pp. 11-13.
- Bore tolerance:
METRIC SIZES : +.05mm
 -.00mm

PART NUMBER				SPECIFICATIONS					
WITHOUT KEYWAY		WITH KEYWAY		BORE 1 (mm)	BORE 2 (mm)	OUTER DIAM. OD (mm)	LENGTH L (mm)	KEYWAY K (MSCC ONLY) (mm)	FORGED SOCKET SET SCREW
BLACK OXIDE STEEL	STAINLESS STEEL	BLACK OXIDE STEEL	STAINLESS STEEL						
MSCX-6-6-F	MSCX-6-6-SS			6	6	18	30	2	M4
MSCX-8-8-F	MSCX-8-8-SS	MSCC-8-8-F	MSCC-8-8-SS	8	8	24	35	2	M4
MSCX-10-10-F	MSCX-10-10-SS	MSCC-10-10-F	MSCC-10-10-SS	10	10	29	45	3	M5
MSCX-12-12-F	MSCX-12-12-SS	MSCC-12-12-F	MSCC-12-12-SS	12	12	29	45	4	M6
MSCX-14-14-F	MSCX-14-14-SS	MSCC-14-14-F	MSCC-14-14-SS	14	14	34	50	5	M6
MSCX-16-16-F	MSCX-16-16-SS	MSCC-16-16-F	MSCC-16-16-SS	16	16	34	50	5	M6
MSCX-18-18-F	MSCX-18-18-SS	MSCC-18-18-F	MSCC-18-18-SS	18	18	42	65	6	M6
MSCX-20-20-F	MSCX-20-20-SS	MSCC-20-20-F	MSCC-20-20-SS	20	20	42	65	6	M6
MSCX-25-25-F	MSCX-25-25-SS	MSCC-25-25-F	MSCC-25-25-SS	25	25	45	75	8	M8
MSCX-30-30-F	MSCX-30-30-SS	MSCC-30-30-F	MSCC-30-30-SS	30	30	53	83	8	M8
MSCX-35-35-F	MSCX-35-35-SS	MSCC-35-35-F	MSCC-35-35-SS	35	35	67	95	10	M8
MSCX-40-40-F	MSCX-40-40-SS	MSCC-40-40-F	MSCC-40-40-SS	40	40	77	108	12	M10
MSCX-50-50-F	MSCX-50-50-SS	MSCC-50-50-F	MSCC-50-50-SS	50	50	85	124	14	M10